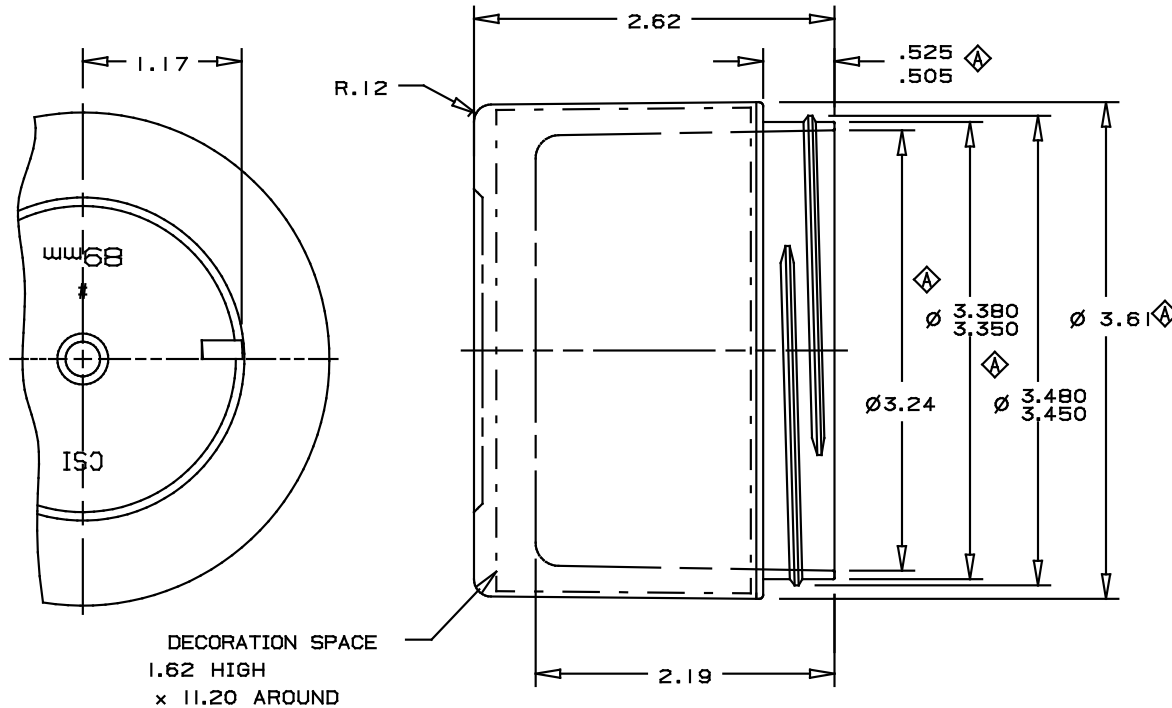


2

1

REV.	DATE	DESCRIPTION	BY
◇	05.18.12	Ø3.61 was Ø3.62, .525/.505 was .52 Ø3.480/3.450 was Ø3.47, 3.380/3.350 was Ø3.37	DJC



NOTES;

- 1) WT. OF EMPTY JAR; 46.5g ± 3g.
- 2) CAPACITY TO FILL LEVEL; 8 fl. Oz. OR 237 ml.
- 3) CAPACITY TO OVERFLOW; 9.35 fl. Oz. OR 276.5 ml.
- 4) THREAD; 5 T.P.I., 1 1/8 TURNS.

PP	LINER
PP	SHELL

DET.	REQ'D	DESCRIPTION	MATERIAL	SIZE
SCALE:		DRAWN:	DATE:	CSI COSMETIC SPECIALTIES, INTL., LLC 550 EAST THIRD ST. OXNARD, CA 93032 (805) 487-8898
1:1		DJC	01.08.09	
DESIGN:	DATE:	CHECKED:	DATE:	
KMM	04.22.94	DJC	05.18.12	

TITLE:
JAR; 89 mm, 8 Oz., STRAIGHT-SIDED

INCH		TOLERANCE EXCEPT AS NOTED	
THIRD ANGLE PROJECTION		.XX	±.015
		.XXX	±.010
		.XXXX	±.005
		FRAC.	±1/32
		ANG.	± 0°30'

DRAWING NUMBER:	14-0445-00-1-0-000	REV.	OF
		A	SHT.

2

1